

**Powerful through maintenance-free  
3-phase AC motor**

**Manoeuvrable and compact through  
small chassis dimension**

**Fully manoeuvrable with tiller in upright  
position through crawl speed button**

**Excellent stability on corners  
through ProTracLink**



## **EJE 116/118/120**

### **Electric pedestrian operated pallet truck (1600, 1800 and 2000 kg)**

The EJE Series 1 pallet trucks are particularly economical helpers. For lorry loading and offloading as well as for horizontal transport over short distances. The main advantage: they are the ideal truck to take on a lorry through their very short chassis dimension ( $L_2$ ) of only 480 mm (short version).

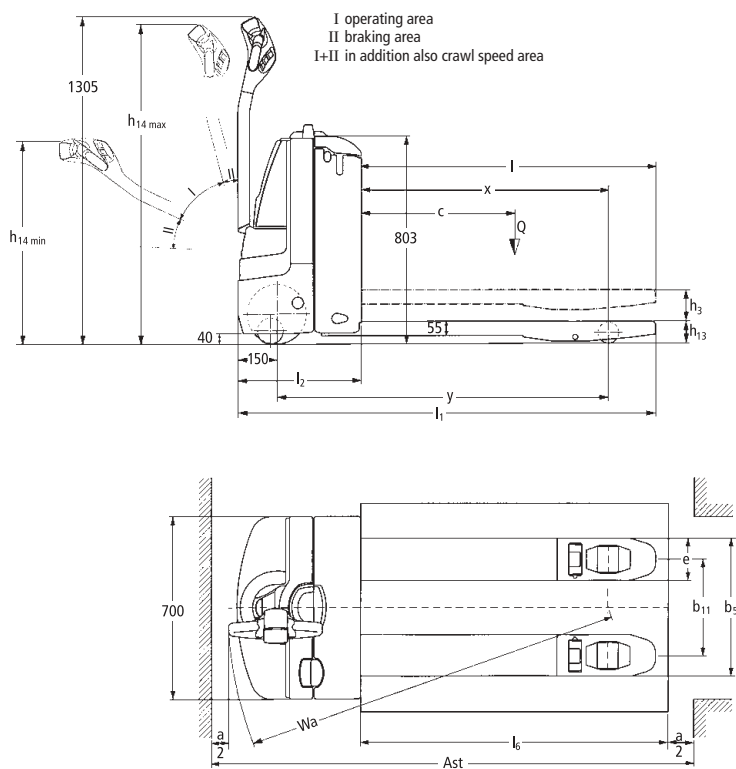
The powerful drive motor in 3-phase AC technology is another plus. Its optimum efficiency factor ensures high speed and powerful acceleration in every situation – the ideal precondition for fast, efficient goods throughput. Added to the speed of

operation is the long operating time: batteries up to 250 Ah in combination with excellent energy management guarantee long operating times – even for intensive utilisation.

The operator has everything under control at any time with the bottom mounted long tiller. It ensures the essential distance between operator and truck. Particularly on corners, the EJE 116–120 never gets “too close” to the operator. And if space is at a premium, the crawl speed button facilitates safe travel with the tiller in the upright position. One touch of a button

is sufficient: the brake is released and the drive switch controls travel at much reduced speed. The low overall height primarily pays off in a confined space. It provides even the shorter operator with optimum visibility towards the fork tips.

# EJE 116/118/120



# Technical Data in line with VDI 2198 as at: 09/2005

|                  |      |  |                         |                         |                         |      |
|------------------|------|--|-------------------------|-------------------------|-------------------------|------|
| Identification   | 1.1  | Manufacturer (abbreviation)  | Jungheinrich            | Jungheinrich            | Jungheinrich            | 1.1  |
|                  | 1.2  | Manufacturer's type designation  | <b>EJE 116</b>          | <b>EJE 118</b>          | <b>EJE 120</b>          | 1.2  |
|                  | 1.3  | Drive (electric – battery or mains, diesel, petrol, fuel gas, manual)  | electric                | electric                | electric                | 1.3  |
|                  | 1.4  | Type of operation (manual, pedestrian, standing, seated, order picker) | pedestrian              | pedestrian              | pedestrian              | 1.4  |
|                  | 1.5  | Load capacity/rated load Q (t)   | 1.6                     | 1.8                     | 2.0                     | 1.5  |
|                  | 1.6  | Load centre distance c (mm)  | 600                     | 600                     | 600                     | 1.6  |
|                  | 1.8  | Load distance, centre of drive axle to fork x (mm)                     | 910 <sup>1)</sup>       | 910 <sup>1)</sup>       | 910 <sup>1)</sup>       | 1.8  |
|                  | 1.9  | Wheelbase y (mm)   | 1240/1310 <sup>1)</sup> | 1240/1310 <sup>1)</sup> | 1240/1310 <sup>1)</sup> | 1.9  |
| Weights          | 2.1  | Service weight incl. battery (see line 6.5) kg                         | 438                     | 438                     | 440                     | 2.1  |
|                  | 2.2  | Axle loading, laden front/rear kg                                      | 755/1283                | 895/1343                | 990/1450                | 2.2  |
|                  | 2.3  | Axle loading, unladen front/rear kg                                    | 348/90                  | 348/90                  | 349/91                  | 2.3  |
| Wheels, Chassis  | 3.1  | Tyres (solid rubber, superelastic, pneumatic, polyurethane)            | PU/PU                   | PU                      | PU                      | 3.1  |
|                  | 3.2  | Tyre size, front   | 230 x 70                | 230 x 70                | 230 x 70                | 3.2  |
|                  | 3.3  | Tyre size, rear  | 82 x 100                | 82 x 100                | 82 x 100                | 3.3  |
|                  | 3.4  | Additional wheels (dimensions)   | 100 x 40                | 100 x 40                | 100 x 40                | 3.4  |
|                  | 3.5  | Wheels, number front/rear (x = driven wheels)                          | 1x + 2/2                | 1x + 2/2                | 1x + 2/2                | 3.5  |
|                  | 3.6  | Track width, front b <sub>10</sub> (mm)                                | 464                     | 464                     | 464                     | 3.6  |
|                  | 3.7  | Track width, rear b <sub>11</sub> (mm)                                 | 370/510                 | 370/510                 | 370/510                 | 3.7  |
| Basic Dimensions | 4.4  | Lift height h <sub>3</sub> (mm)  | 122                     | 122                     | 122                     | 4.4  |
|                  | 4.9  | Tiller height in drive position min./max h <sub>14</sub> (mm)          | 840/1275                | 840/1275                | 840/1275                | 4.9  |
|                  | 4.15 | Lowered height h <sub>13</sub> (mm)                                    | 85                      | 85                      | 85                      | 4.15 |
|                  | 4.19 | Overall length l <sub>1</sub> (mm)                                     | 1630/1700               | 1630/1700               | 1630/1700               | 4.19 |
|                  | 4.20 | Length to face of forks l <sub>2</sub> (mm)                            | 480/550                 | 480/550                 | 480/550                 | 4.20 |
|                  | 4.21 | Overall width b <sub>1</sub> /b <sub>2</sub> (mm)                      | 700                     | 700                     | 700                     | 4.21 |
|                  | 4.22 | Fork dimensions s/e/l (mm)   | 55/162/1150             | 55/162/1150             | 55/162/1150             | 4.22 |
|                  | 4.25 | Width over forks b <sub>5</sub> (mm)                                   | 530/670                 | 530/670                 | 530/670                 | 4.25 |
|                  | 4.32 | Ground clearance, centre wheelbase m <sub>2</sub> (mm)                 | 30                      | 30                      | 30                      | 4.32 |
|                  | 4.33 | Aisle width for pallets 1000 x 1200 crossways Ast (mm)                 | 1865/1935 <sup>2)</sup> | 1865/1935 <sup>2)</sup> | 1865/1935 <sup>2)</sup> | 4.33 |
|                  | 4.34 | Aisle width for pallets 800 x 1200 lengthways Ast (mm)                 | 1915/1985 <sup>3)</sup> | 1915/1985 <sup>3)</sup> | 1915/1985 <sup>3)</sup> | 4.34 |
| Performance Data | 4.35 | Turning radius Wa (mm)   | 1425/1495 <sup>1)</sup> | 1425/1495 <sup>1)</sup> | 1425/1495 <sup>1)</sup> | 4.35 |
|                  | 5.1  | Travel speed laden/unladen km/h  | 6.0/6.0                 | 6.0/6.0                 | 6.0/6.0                 | 5.1  |
|                  | 5.2  | Lift speed laden/unladen m/s   | 0.034/0.042             | 0.033/0.042             | 0.032/0.042             | 5.2  |
|                  | 5.3  | Lowering speed laden/unladen m/s                                       | 0.053/0.036             | 0.053/0.036             | 0.053/0.036             | 5.3  |
|                  | 5.8  | max. gradient performance laden/unladen %                              | 10/20                   | 9/20                    | 8/20                    | 5.8  |
|                  | 5.10 | Service brake  | electric                | electric                | electric                | 5.10 |
| E-Motor          | 6.1  | Drive motor rating S <sub>2</sub> 60 min. kW                           | 1.0                     | 1.0                     | 1.0                     | 6.1  |
|                  | 6.2  | Lift motor rating at S <sub>3</sub> 15 % kW                            | 1.2                     | 1.2                     | 1.2                     | 6.2  |
|                  | 6.3  | Battery acc. to DIN 43531/35/36 A, B, C, no                            | short: no   long: B     | short: no   long: B     | short: no   long: B     | 6.3  |
|                  | 6.4  | Battery voltage, nominal capacity K <sub>s</sub>                       | 24/150   24/230         | 24/150   24/230         | 24/150   24/230         | 6.4  |
|                  | 6.5  | Battery weight kg  | 150                     | 150                     | 150                     | 6.5  |

1) load section lowered: +55 mm

2) load section lowered: +55 mm; diagonal acc. to VDI: +367 mm

3) load section lowered: +55 mm; diagonal acc. to VDI: +204 mm

# Make use of the advantages

## Innovative 3-phase AC technology

Jungheinrich motors in 3-phase AC technology are more efficient and at the same time reduce operating costs. Make use of these advantages:

- High efficiency factor with excellent use of energy resources.
- Powerful acceleration.
- Quick direction change without customary "moment of reflection".
- No carbon brushes – the drive motor is maintenance-free.
- 2-year warranty on drive motor.



Powerful thanks to innovative 3-phase AC technology

## Travel in comfort

The Jungheinrich impulse control "Speed-Control" facilitates comfortable, safe travel with adjustment opportunities for every application:

- The set speed on the drive switch is maintained in every travel situation – even on gradients.
- The EJE 116–120 is automatically braked during unintentional roll-back on ramps.
- Individually adjustable travel parameters (acceleration, end speed, motor brake) facilitate optimum adjustment to every requirement.
- The operator has a choice of three different travel programs (optional).
- Energy reclamation through regenerative braking by taking back the travel speed.



Comfortable and safe on the ramp

- Very low noise level during travel.

## Long operating times

The energy-saving 3-phase AC technology in combination with battery capacities of up to 250 Ah are the best guarantee for long operating times:

- Short version: 2 PzB 130/150 Ah.
- Long version: 2 PzS 180/230 (250) Ah.
- Integrated charger (24V/30A for wet batteries and maintenance-free batteries) for effortless charging at any mains socket (optional).

## Well informed at any time

Extensive monitoring instruments and adjustment options facilitate control at a glance:



Jungheinrich CanCode and CanDis (optional)

- Battery discharge monitor (luminous diode in 3 colours) with lift cut-off.
- Information display "CanDis" (optional) with additional operating hour display and fault code data memory.
- Activation of truck via PIN and choice of 3 travel programs via "CanCode" (optional).
- Adjustable travel parameters with CanDis and CanCode (optional).

## Optimum cornering

Sprung, hydraulically cushioned support wheels – linked via the coupling crank "ProTracLink" – distribute stabilising forces dependent on travel conditions: evenly over all wheels during straight travel; concentrated on the outer support wheel during cornering.

## Reduced maintenance

3-phase AC technology in particular ensures significant long-term reduction of operating costs:

- Maintenance-free 3-phase AC drive motor with no carbon brushes.
- Easy access to all aggregates through one-piece front cover held by only two screws.
- Secure protection of controls and plugs from dust and damp through enclosures according to IP 54.
- Low support wheel wear during sloping ramp ascent through level adjustment: through a mechanical connection, both support wheels are constantly at the same height. No catching of or damage to the lower support wheel.

## Additional equipment

- Buzzer instead of horn.
- Special switch lock for easy release of brake.
- Vertical load guard.
- Cold store design.

## Jungheinrich UK Ltd.

Head Office:

Sherbourne House  
Sherbourne Drive  
Tilbrook  
Milton Keynes MK7 8HX  
Telephone 01908 363100

info@jungheinrich.co.uk  
www.jungheinrich.co.uk

ISO 9001, ISO 14001  
Certification of Quality and  
Environment Management.



Jungheinrich trucks  
conform to the European  
Safety Requirements.



**JUNGHEINRICH**  
*Well worthwhile*